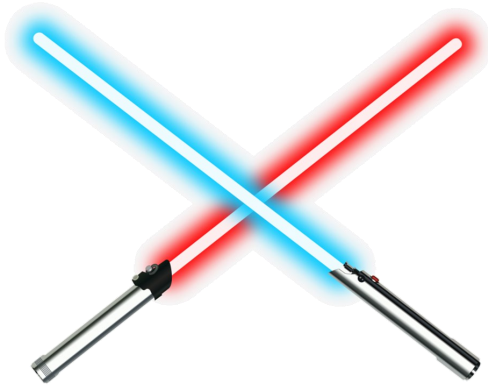


# Mini LED Lightsaber



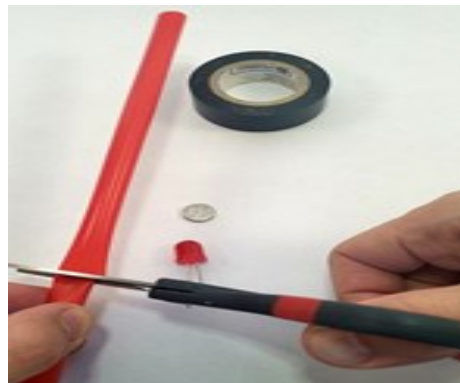
## Materials Needed:

- ⇒ Milkshake Straw
- ⇒ CR1220 Coin cell battery
- ⇒ 10mm LED

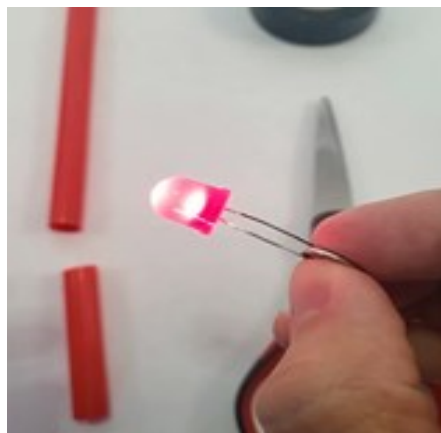
\* You will also need a good pair of scissors, and electrical tape.

## Instructions

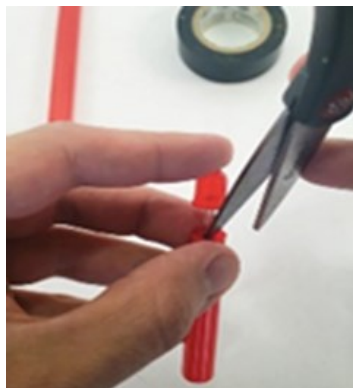
- 1) Cut your straw into 2 pieces, with one piece longer than the other.



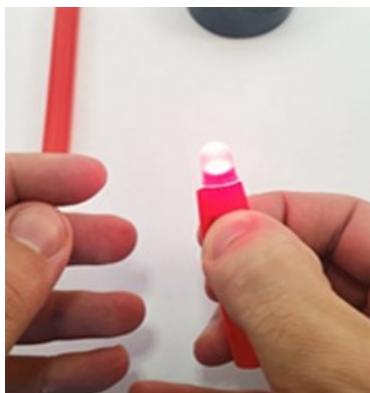
- 2) Pinch the legs of the LED so they squeeze the 2 faces of the battery. The long leg of the LED should touch the positive (+) side of the battery. The LED should light up. If it does not, it is backwards and will need to be flipped.



3) Tape one of the LED legs to one side of the battery. Make sure there is a gap between the other side of the battery and the other leg, so the LED only turns on when you squeeze them together.



4) Press the battery and both LED legs into the shorter piece of straw (the handle). Be careful that the tape does not slide off the LED leg. It helps to use something like the scissors or a pencil to press the battery down into the straw. Press until the bottom of the LED is flush with the top of the straw.



5) Squeeze the straw where the battery is, and the LED should light up. Slide the longer piece over the one and wrap with electrical tape. Squeeze the handle to light up your lightsaber!

