

# Visit Us

## Stuart MacPherson Public Library

Bold Center  
101-8702 91 Avenue  
Box 2039  
Lac La Biche, AB  
T0A 2C0

Email: [info@llbcl.ca](mailto:info@llbcl.ca)

## Plamondon Municipal Library

École Plamondon  
9814-100 Street  
Plamondon, AB

\*Direct mail to the main branch

Email: [info@llbcl.ca](mailto:info@llbcl.ca)

Connect with us on Facebook:

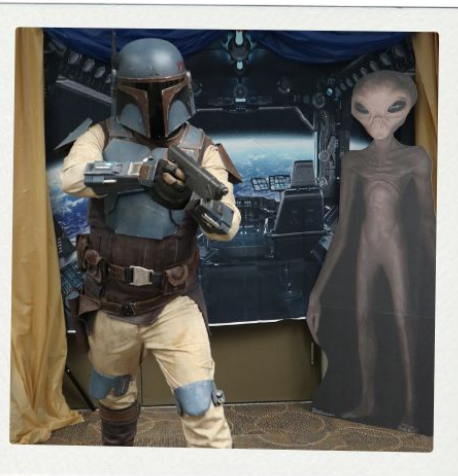
Lac La Biche County Libraries

For information regarding all  
programs and services 780-623-7467  
or visit [www.llbcl.ca](http://www.llbcl.ca)

# Lac La Biche County Libraries

## Services Guide





## What's Available @ LLBCL

3D Printing  
 Art Displays  
 Binoculars  
 Brainfuse  
 Board Games  
 Books  
 Cake Pans  
 Creativebug  
 Death Cafe  
 eBooks  
 Educators Box Loans  
 e-Resources  
 Escape Room  
 Exam Proctoring

Free Memberships  
 Ladies Nights  
 Library Con  
 Library of Things  
 Library Tours  
 Makerspace Kits  
 Magazines  
 ME Libraries  
 Movies & TV Shows  
 Musical Instruments  
 Papercraft Equipment  
 Papercraft Supplies  
 Partner Programs  
 Play & Coloring Areas

Print Disabled Services  
 Printing, Scanning & Faxing  
 Public Computers  
 Reading Programs  
 Recreation Passes  
 Scavenger Hunts  
 Steampunkery Kits  
 Study Rooms  
 Summer Literacy Program  
 Telescopes  
 Video Games  
 Voices of the Land  
 VR System  
 Wi-Fi Access

**llbcl.ca**

**Phone: 780-623-7467**



## Our Collection

We are more than just books!

A few of our circulating items:

- Board Games
- Cake Pans
- Cognitive Care Kits
- Musical Instruments
- Radon Screening Kit
- Sewing Machine
- Telescopes
- Toybox 3DPrinter
- Video Games

## Access Beyond Your Local Library

Your Library Membership card functions as both a TRAC and ME card and provides you the opportunity to access all public libraries throughout Alberta.

TRAC (The Regional Automation Consortium)



You can use your library card to access the collection shared by public libraries in four Regional Library Systems. Whether you are travelling throughout Alberta or placing requests through a catalogue, the choice of materials is limitless. Never leave home without your library card by downloading the TRACpac library app.



ME Libraries is Alberta Wide Borrowing – a free, self-registration service which can be accessed at [melibraries.ca](http://melibraries.ca) that allows you to use your own library card to borrow materials at any participating library you have registered with.



# Material Donations

## Book Donations

For donations needing an official tax receipt please drop them off at the Stuart MacPherson Public Library location and request an information form to accompany your donations. Please note that these receipts totaling \$20.00 or more will be issued once a year around tax season.

### What We Accept

- Recent books (published in last 3 years),
- DVD's
- Audio Books
- Magazines (re-assigned to schools for projects)

### We Are Unable to Accept

- Books that are musty or water damaged
- Hardcover books older than 3 years
- Encyclopedias & Textbooks
- Reader's Digest Book Collections
- National Geographic Magazines
- Reader's Digest
- DVD's, Audio Books without cases
- Home recorded media VHS or Cassette Tapes

## Magazine Subscriptions

Did you know that you can support the library by purchasing a magazine gift subscription? Please check with library staff before purchasing.

## What Happens to My Donations?

Each year we receive a huge amount of donated materials. Some donated items are added to our collection, sold on our used bookshelf or reassigned to another organization. With the volume of material, we receive we ask donors to adhere to the guidelines.

Thank you for your continued support of your local libraries.

# Library Memberships

Any person residing in Lac La Biche County or living on a settlement or reserve in Alberta is eligible to apply for a free card to borrow library material.

Members are responsible for all materials charged out on their membership. If an item is lost or returned damaged, the member must pay the charges before any other items may be checked out. For materials that are claimed lost (45 days overdue) billing notices are sent to the library member and these items are now considered to be their property. Replacement costs need to be paid before any requests can be filled.

### Card Fee

If you need to replace your library card there is a \$2 replacement fee.

### Borrowing Privileges

You can renew any borrowed material, in person or by phone, as long as the item isn't overdue and no one else has placed a reserve on the item.

Imagine being able to take out books at a public library elsewhere in Alberta and return them at your home library. This card will allow you to borrow books directly from participating libraries at no extra cost.

If you are a member of another library that belongs to TRAC (The Regional Automation Consortium) or you have an ME Card, you are welcome to use these cards to borrow materials at our libraries.

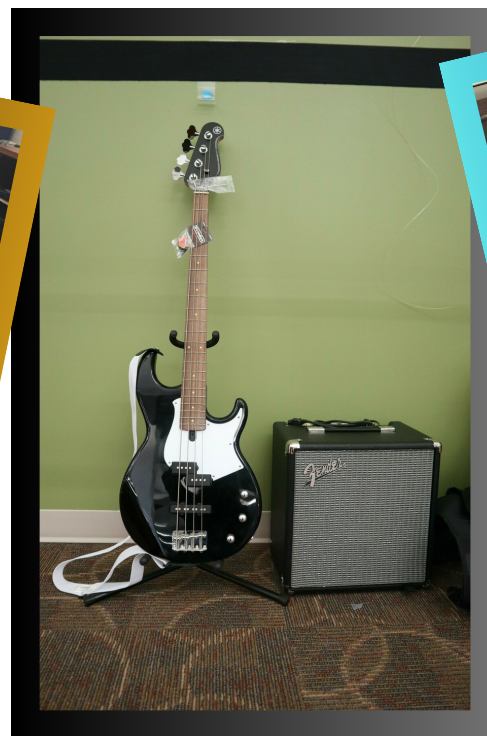
At times libraries outside of Alberta charge fees for sending interlibrary loans (ILL's). This cost must be paid by the patron when the item is picked up at our library.

## Loan Periods

Books & Magazines	21 days
CD's	21 days
Videos	7 days



# Library of Things



So how much does your  
FREE library membership  
save you in e-resources in a year?



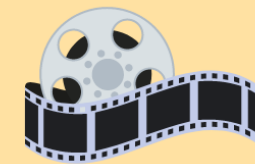
**Audible \$188**  
**Overdrive, Cloud**  
**Library... are free**



**Prime \$100**  
**Overdrive, Cloud**  
**Library... are free**



**Apple News+ \$164**  
**Press Reader for**  
**news is free**



**Netflix \$252**  
**Hoopla is free**



**Rosetta Stone**  
**\$144**  
**Pronunciator**  
**is free**



**Ancestry \$378**  
**Ancestry Library**  
**Edition is free**



**Solaro \$360**  
**Solaro and**  
**Brainfuse are free**



**Linked In \$600**  
**Linked In**  
**Learning is free**

**You saved \$2,186 & we have many more resources.**  
**Just visit our website [lbcl.ca](http://lbcl.ca) to see all that we have**  
**to offer. Your local library is invaluable!**



# Services

## Internet and Computer Access

### Public Computers

To use our public computers, one must stop at the circulation desk to register. Accessing pornography and other unlawful activities are strictly prohibited and result in a loss of library privileges. If you are watching videos or playing games with sound, we recommend the use of headphones. The Library does not provide headphones due to health reasons.

### Wi-Fi for Laptop and Mobile Devices

To access our wireless service, Library members can log in with their barcodes and PIN number. Guests are invited to request a wireless login at the front desk.

## Printing, Scanning & Fax Service Fees

- Black & White
- Colour
- Faxing
- Scan to email

Printing service available at the Main Branch - @PrintByXerox. This service allows you to send in a print job right from your device or laptop. Once onsite staff will use the @PrintByXerox login information that at you provide in order to access the job resulting in a higher quality print on a variety of page sizes.

## Exam Proctoring

Exam times are available by appointment only. Book your exam well in advance to ensure proper proctoring services.

<https://short.llbcl.ca/Proctoring>

## Library Tours & Special Group Programs

Bring your class, daycare, or club on a tour of the library and learn about all the programs and services we have to offer. We can also provide special children's programming upon request, to staff availability.

# Pop Up Libraries

The Remote Circulation Services provides a wide range of library materials to residents of Lac La Biche who are unable to get out to the library or make use of its services on their own. For the current locations, dates and times visit:

<https://www.llbcl.ca/services/pop-up-library>.

## To qualify for this service, you must:

- Have a valid Lac La Biche County Libraries membership
- Have access to one of the service points
- Be a Lac La Biche County resident or live in one of the Indigenous communities surrounding Lac La Biche

Our library staff will select the materials based on the expressed interests. These materials will be delivered to each location and loans/requests will be collected at this time.

## You may borrow:

- Regular and Large Print Books
- Paperbacks and magazines
- Books in Other Languages
- Music CDs
- Selected DVDs
- Audio Books
- CNIB Daisy Books and Daisy Readers
- Special Collection items (upon request only)

This service is convenient and best of all it is included in your library membership.

For more information including upcoming dates contact the main branch at 780-623-7467 or visit llbcl.ca - Services - Pop Up.

**Scope of Services Provided by the  
Lac La Biche County Library Board  
to the Residents of Lac La Biche County Library,  
Beaver Lake Cree Nation, Buffalo Lake Métis Settlement  
Heart Lake First Nation and Kikino Métis Settlement.**

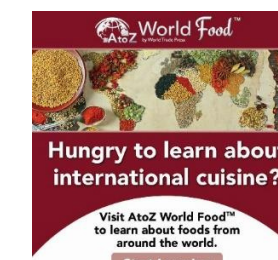
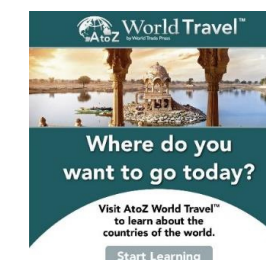
- All school & daycare staff are eligible for a free educator card which enables them to have materials to use in the classroom for a longer loan period through the box loan service.  
Box Loan Form: <https://short.llbcl.ca/BoxLoan>
- Upon successful completion of an application form, residents of Lac La Biche County and surrounding Indigenous communities are eligible for a free standard membership.  
Online Application: <https://short.llbcl.ca/MembershipApp>
- All Library members have access to our Inter-Library Loan services and may place requests either in person, on the phone, or online.
- The Library's public computers, scanner, and printer are available for all members of the public, so library memberships are not necessary.
- Orientations to local schools by library staff can be provided annually and throughout the year upon request or upon an identified need. These sessions may include introductions to TRACpac, Hoopla, ME Service, and other electronic resources.
- Existing Library services available to all users of the Library's public computers upon request include: Internet searching & Library Skills.
- All school-oriented Library offerings must be booked in advance through the Library Director to ensure that mutual calendar accommodations can be made.



**Website: [www.llbcl.ca](http://www.llbcl.ca)**

**Phone: 780-623-7467**

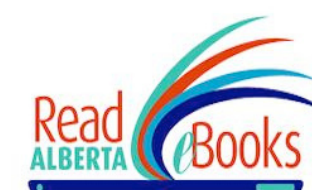
**Access Electronic Resources With a Valid Library Card**



Got homework?

Get *brainfuse* **HelpNow**

Free live online tutoring,  
writing lab,  
and so much more!



**For more information visit:**  
<https://www.llbcl.ca/eresources>