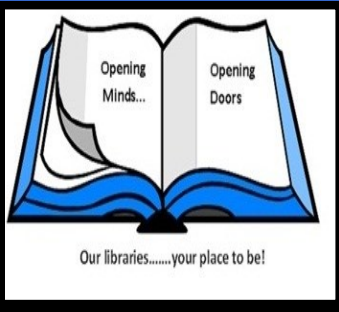


2021

NLLS Member Libraries



LAC LA BICHE COUNTY LIBRARIES

# Annual Review

## Message from the Library Board

2021 has continued to present unique challenges related to the presence of COVID in our lives and our communities. Health and Public Safety restrictions naturally impact our ability to safely provide our usual full range of enthusiastically received public services. Undertaking a new 5 Year Plan of Service during this time certainly caused the Team to once again “up their game” to ensure that our public and library members have had access to our wide range of offerings to the highest degree possible.

Despite these circumstances, our talented and committed Library Team achieved some very impressive goals in performing their roles. 234 Programs reached 3688 participants even with the many periods of closure to public group offerings. Interlibrary loans processed increased year over year from 14,762 to 23,579 items to our members, items circulated increased by 6,000 and 15,400 visits were made to our library sites. 101 children’s programs were able to be offered when circumstances allowed.

2021 again required us to continue to pivot to meet public needs. We are proud to say that staff dedication allowed continuance of services, designing offerings in new modes and constant communications with our public to ensure they knew how to reach us, how to access services and the current status of safety standards at any time.

Families took advantage of curbside pick up, Take and Make It Kits, on-line offerings for all ages and interests and available on-site services that met their needs. Our ever-popular Summer Literacy Program continued both in-person and virtually and once again won rave reviews for the work of that team and the enthusiasm generated in our young participants.

As two longstanding members of our Library Board retired from their roles, we have recruited new and equally enthusiastic and dedicated members. We look forward to their contributions at our Board table and on the respective committees that they serve.

At the time of writing, we have just reactivated our community pop-up services where circumstances allow and are very excited to be having a personal presence in Kikino, Heart Lake, Plamondon and the Heritage Centre.

As always, we encourage everyone to keep up to date on our many offerings and take advantage of those that capture your interest. Follow us on our website at [www.llbcl.ca](http://www.llbcl.ca), our Facebook Page under Lac La Biche County Libraries, listen in to our Wednesday morning weekly radio spot on Boom 103.5 or give us a call – we are always happy to hear from you!

### “Our Libraries – Your Place to Be!”

#### Staff Members

- K. Blair
- K. Gagne
- C. Laboucane
- B. McClintic

#### Staff Members

- C. Nicholls
- V. Patenaude
- M. Penn
- J. Wicker

#### Board Members

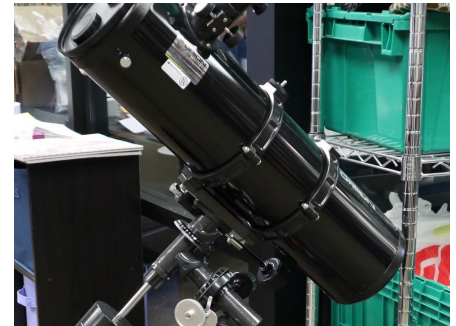
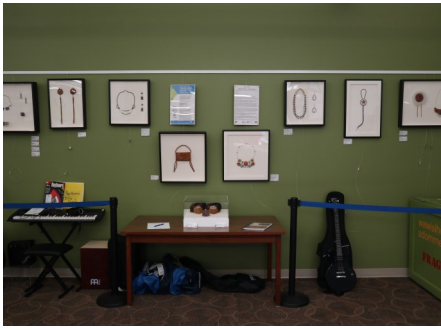
- L. Anderton
- D. Beniuk
- N. Broadbent
- C. Borgun
- D. Craig
- J. Fulawka

#### Board Members

- S. Makokis
- A. Peoples-Sprecker
- R. Clark
- D. Thomas

Current as of January 2022

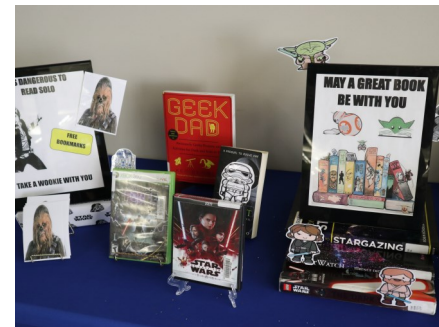
# Photo Highlights from 2021



**Art Exhibits**

**Time Stamps**

**New Collections**



**Services**

**Special Displays**

**Summer Reading Program**

# Library Information

---

## Lac La Biche County Libraries (2021)

---

Circulation*	39,533	Holds Placed	6,604	WiFi Sessions	17,017
Circulation per patron	16.73	Circulation per book	1.26	Programs	234

*\*Includes in-house use of items*

---



### Number of ILL Items

**2020 - 14,762**

**2021 - 23,579**



### Total Circulation

**2020 - 33,543**

**2021 - 39,533**



### Programs & Participants

**2020 - 250 & 4,735**

**2021 - 234 & 3,688**

## Did you know?

- Any person residing in Lac La Biche County or living on a settlement or reserve in Alberta can apply online to obtain a FREE library card.
- No overdue fines or fees.
- We have 2 branches (Bold Center/École Plamondon) and various pop up locations.
- Proctoring services are available at the main branch.
- Computers, audio recording studio, and study rooms can be reserved free of charge.
- Book displays are rotated every 2 months.
- With your valid membership you can access local databases including Brainfuse. This resource offers students learning support from kindergarten up to grade 12. There is also support for university courses, adult learners, and resume writing. Students can chat live with online tutors and create customized study aids.
- Tablets, Nintendo Switch, Snapcircuits, board games, audio recording kits, video games, cake pans, Telus Hub, and musical instruments are available for loan.
- All Access Passes are available for checkout which provides access to the Bold Center, Plamondon Arena and Portage Pool all in the same day.
- Book orders can be placed over the phone and holds are always recommended as many of books do not stay on our shelves for very long.



# Lac La Biche County Libraries

Annual  
Report  
2021



Our libraries were open for **3,332** hours despite COVID19



**2,363** people have a card at our libraries



**15,410** people walked through our doors



**7,494** website visits



We added **3,175** new items last year



Bringing the total local collection to **49,985**



**6,557** downloads of e-Content



Contributing to a total of **39,533** checkouts!



Lent out **10,049** items



Our service is delivered by **8** dedicated staff and **26** amazing volunteers



**9** public computers



Brought in **13,530**



The library held **15** promotional and outreach events where **353** people heard our message



They were in use for a total of **6,792** hours



**101** kids programs, **36** for 13+ & **82** for families with **3,335** attendees



**17,017** Wi-Fi sessions